

Our Vision

Make supply chain a strategic choice, instead of a tactical reality.

Our Mission

Implement supply chain initiatives that leverage the supply chain with the firm's business strategy to increase overall profitability.

Our Values

- Integrity
- Realistic vs. Perfect
- Incremental vs. Big Bang
- Data Supported Decision Making
- Supplier Agnostic

Supply Chain Focus Areas

- Logistics & Transportation
- Carrier Management
- Network Modeling
- Purchasing and Planning
- Buy vs. Make Analysis
- Process Analysis & Re-Engineering
- Global trade



Our Approach to Your Challenges

Using deep supply chain expertise, continuous improvement, and project management principles to maximize profit, BEI brings order to chaos by:

- Improving operating profits through supplier collaboration, logistics, inventory management and quality control.
- Finding ways to reduce overhead and increase efficiency producing measurable, repeatable results.
- Developing financial models to optimize “buy vs. make” decisions
- Implementing a continuous improvement program.
- Designing and implementing multi-year procurement strategies.
- Guiding the management of workforces and contractors across multi-state operations.

Levels of Service

BEI Global offers our expertise through three levels of service:

- **Project-Based Problem Solving.** Implementing real-world solutions customized for each client.
- **Ongoing Advisory and Project Alliances.** Longer-term engagements to solve complex situations.
- **Advisory.** Supporting general business needs.

Process



What Makes Us Different

- We focus on the ability to implement meaningful solutions.
- We have 30+ years of real-world experience.
- Our work is supported by analytics, modern theory and experience.

Contact BEI Global

- Jim.Matcham@beiglobal.com
- 614-400-7136 (mobile)
- 175 South Sandusky Street
Suite 418
Delaware, OH 43015

Why you should let BEI Global guide you...

We focus on **identifying and building solutions** to your critical supply chain challenges by combining modern theory with **30+ years** of real-world experience.

By focusing on **realistic solutions** that can be implemented across time, we support your business goals through **measurable, repeatable results**. Let's plan and execute, not just create reports and explore options.

Company size doesn't matter, **your commitment and interest in affecting real change** does. From advisory work to project-based problem-solving, BEI Global will help you **make supply chain planning and execution a strategic choice** instead of a tactical reality.

Projects or initiatives with BEI Global, **typically last 3-9 months**. Projects often develop into ongoing, collaborative business relationships to continue successful **business evolution and growth**.

Be respectful, be smart, organize, prioritize, & execute.

Strategy for Identifying, Building, & Tracking Solutions

Strategic Decision Support

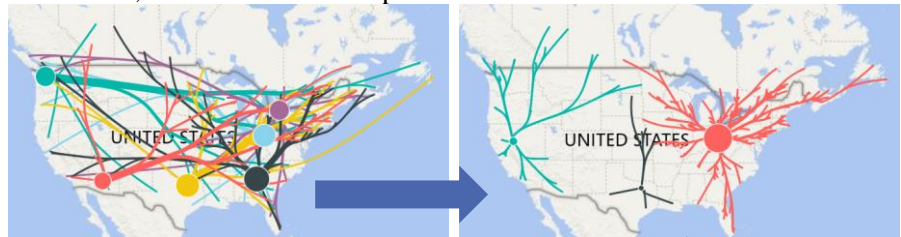
Evaluate current strategies and discover options to reduce your overhead, improve your operating profits, and ensure quality.

Risk / Opportunity	Base case	Outsource	Insource	Mitigation
Total Cost	Medium	High	Low	No
Reduce fixed cost	Low	Medium	Low	No
Speed to implementation	N/A	Slower	Faster	Contractors
Access to skills	Medium	High	Low	Training
Future flexibility	Risk	Opportunity	Risk	Capital Investment
Quality	Medium	High	Medium	Process Improvement
Capital investment	Medium	Low	High	N/A
Best practices	Low	High	Low	Training

Outsource: Trade cost for flexibility, quality and best practices
Insource: Trade lower cost for internalizing business risk

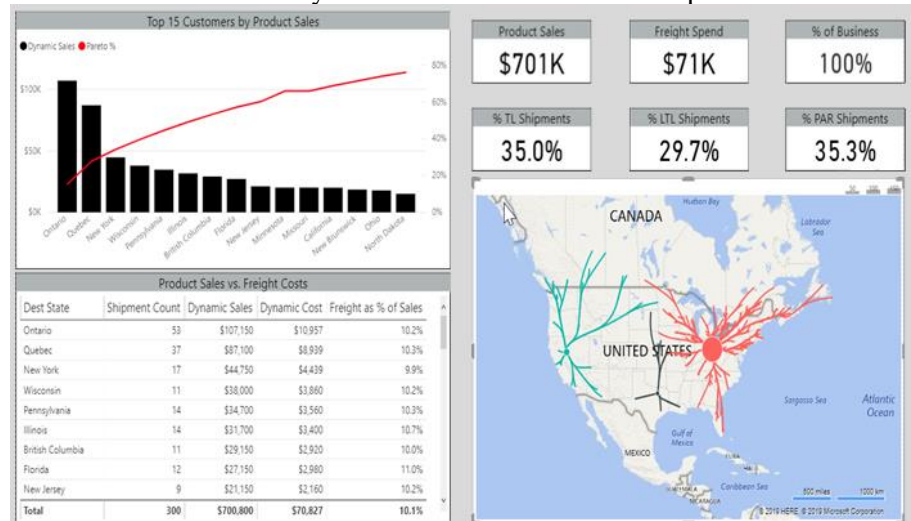
Network Modeling

We work with you to find ways to increase your efficiency across multi-state, even international operations.



Operational Dashboard

Obtain data to make sure your results are trackable and repeatable.



Our Vision

Make supply chain a strategic choice, instead of a tactical reality.

Our Mission

Implement supply chain initiatives that leverage the supply chain with the firm's business strategy to increase overall profitability.

Our Values

- Integrity
- Realistic vs. Perfect
- Incremental vs. Big Bang
- Data Supported Decision Making
- Supplier Agnostic

Supply Chain Focus Areas

- Logistics & Transportation
- Carrier Management
- Network Modeling
- Purchasing and Planning
- Buy vs. Make Analysis
- Process Analysis & Re-Engineering
- Global trade



How BEI's Process Works to Build your Solutions

Diagnostic Investigation

Learn about the company: finances, scope, scale, culture, products, services, and key players

- Define the problem, develop scope, develop strategy to address the problem.
- Deep dive analysis to understand and evaluate the real problem(s). Review people, process and technology. What is the effectiveness and efficiency of your supply chain?
- Areas of investigation can include: Transportation – network analysis, suppliers, global trade suppliers; warehousing effectiveness, purchasing process, benchmarking, service levels to customers, inventory cost, inventory planning, best practices, global compliance, INCO terms....

Recommendations

This phase combines the research from the initial review and diagnostic with 30 years of experience to develop a recommendation.

- Current state, future state and gap review
- Decision support, risk analysis and mitigation options
- Business case, team resources, road map and action plan

Planning

Once the client has made a decision, based upon the recommendation phase, then the solution implementation must be planned. Planning items will include: budget, resources, timing, complexity, project plans

Implementation

Implementation is simply the execution of the planning phase; a solution is nothing without implementation.

- Educational component, change management, a vendor selection, vendor implementation
- Dash boarding: how is the new solution measured for ongoing success? Is there a process to provide actionable information for continuous improvement?

Evaluation and Continuous Improvement

As the new state stabilizes, the project team, leadership and consultants have an opportunity to reflect on the success of the project. Is the solution sustainable? Was the full value realized? What did we learn? Where could we have done better? What is the road map for the future?